

## EGFR(G863D)

**Catalog Number:** 26121

**Gene Symbol:** EGFR/HER1/ERBB1

**Description:** Anti-EGFR(G863D) Mouse Monoclonal Antibody

**Background:** EGFR is a receptor tyrosine kinase binding ligands of the EGF family and activating several signaling cascades to convert extracellular cues into appropriate cellular responses. It activates at least 4 major downstream signaling cascades including the RAS-RAF-MEK-ERK, PI3 kinase-AKT, PLCgamma-PKC and STATs modules. Defects in EGFR are associated with lung cancer (LNCR).

**Immunogen:** A synthetic peptide from the internal region of EGFR which includes the mutation of G863D, human origin.

**Tested Applications:** ELISA, WB, IHC

**Recommended Dilutions:**

ELISA: 1:1000-1:5000

WB: 1:500-1:1000

IHC: 1:50-1:100

**Concentration:** 1 mg/ml

**Host:** Mouse

**Clonality:** Monoclonal

**Isotype:** IgG

**Purity:** Purified from ascites

**Format:** Liquid

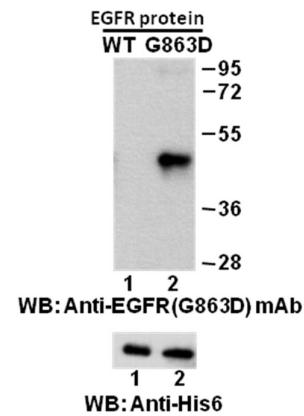
**Preservative:** No

**Constituents:** PBS (without Mg<sup>2+</sup> and Ca<sup>2+</sup>), pH7.4, 150 mM NaCl, 50% glycerol

**Species Reactivity:** Recognizes EGFR(G863D), but not wild type EGFR from vertebrates.

**Storage Conditions:** Store at -20°C. Avoid freeze / thaw cycles.

**Western blot:**

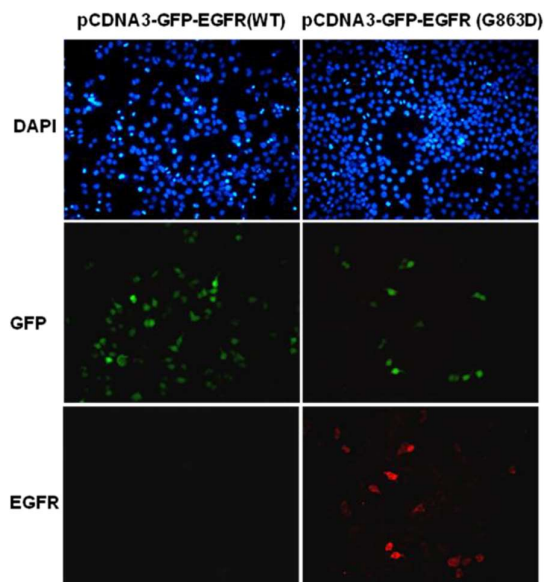


**Western blot analysis of recombinant EGFR (G863D) and wildtype proteins.**

Purified His-tagged EGFR(G863D) protein (amino acid 702-987) (Cat. # 10222) and corresponding wild-type protein (Cat. # 10210) were blotted with anti-EGFR (G863D) mouse monoclonal antibody (Cat. # 26119). Proteins loading were blotted with anti-His-tag monoclonal antibody (Cat. # 28004).

FOR RESEARCH USE ONLY. NOT FOR DIAGNOSTIC APPLICATIONS

**Immunofluorescence:**



**Immunofluorescence of cells expressing EGFR proteins with anti-EGFR (G863D) antibody.**

HEK293T cells were transfected with pCDNA3-GFP-EGFR (WT) plasmid (left column) or pCDNA3-GFP-EGFR (G863D) plasmid (right column), then fixed and stained with anti-EGFR (G863D) monoclonal antibody (Cat. # 26119).

---

**FOR RESEARCH USE ONLY. NOT FOR DIAGNOSTIC APPLICATIONS**